

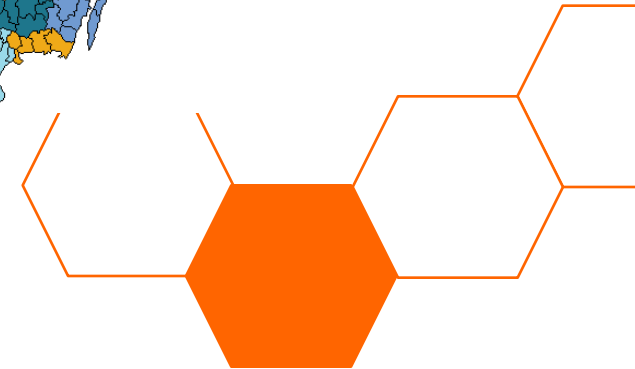
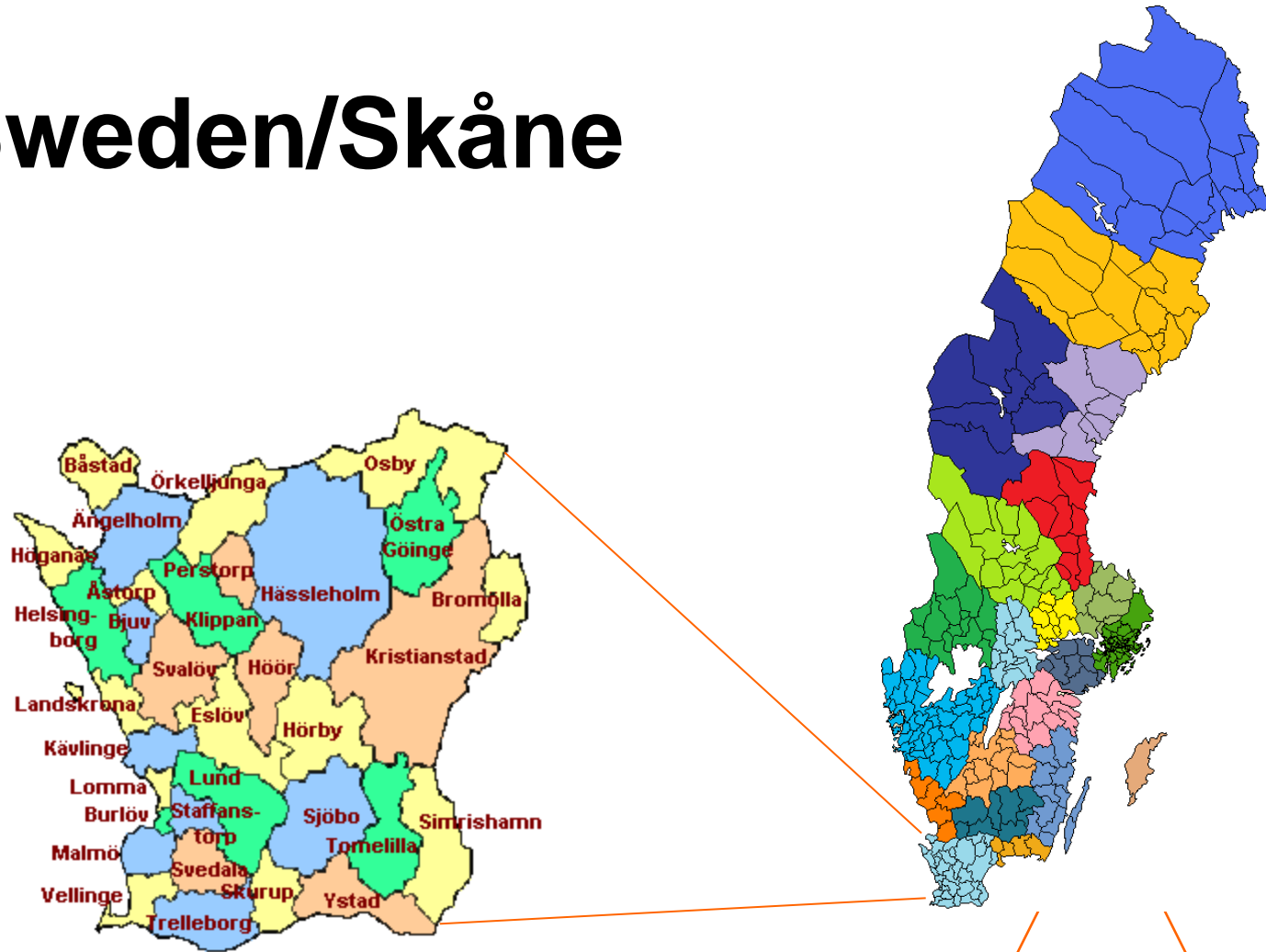
CENTER OF KNOWLEDGE MIGRATION AND HEALTH

**Jenny Malmsten, Head of Unit,
PhD International Migration and
Ethnic Relations**

April 6th 2016



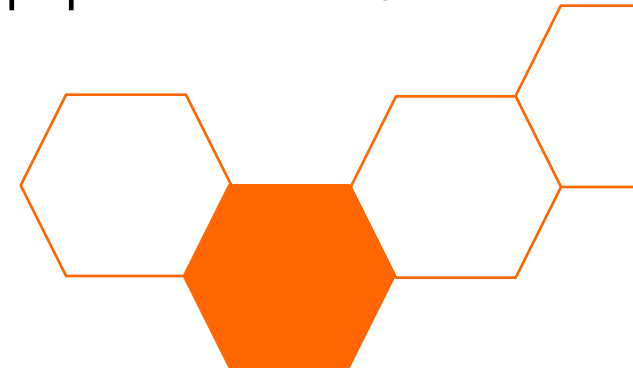
Sweden/Skåne



Sweden/Skåne

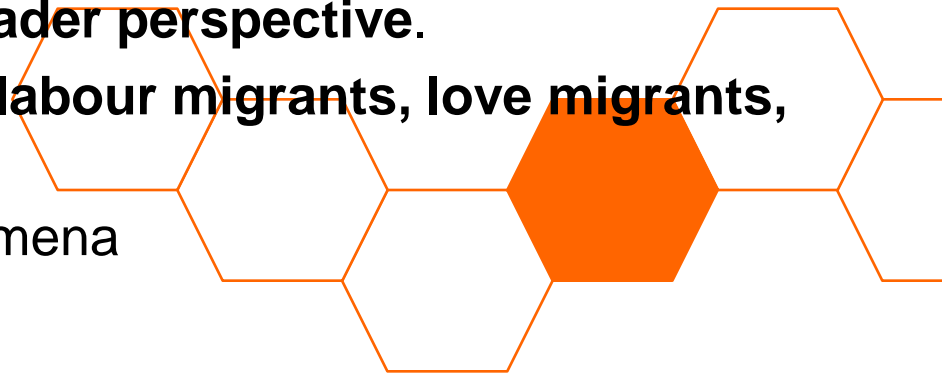
- Sweden is a country of immigration
 - Total population **9.8 million people**.
 - **22.2%** with foreign background
 - **Foreign background** = born in another country than Sweden or born in Sweden with two foreign born parents

- Skåne Regional Council
 - Skåne -10th largest region in Sweden - population of **1.3 million** people (2024 – 1.5 million).
 - **26%** with foreign background
 - Malmö: **43.2%** foreign background.



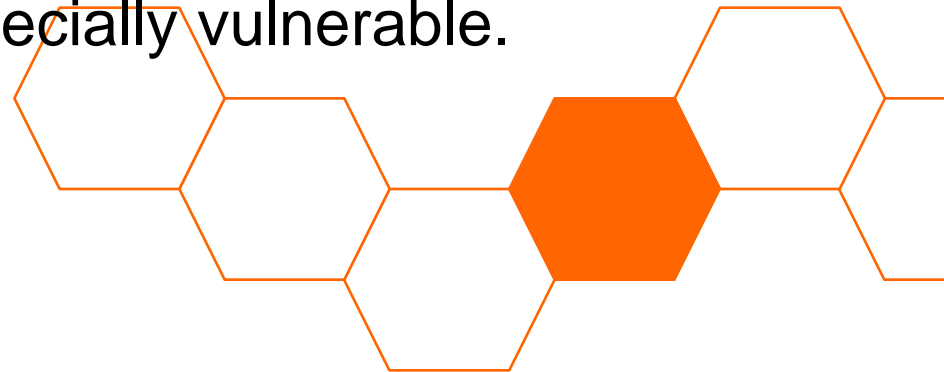
Organisational background

- Migration is a global phenomenon
 - There need to be an **international** approach to health care.
 - Citizens from other countries have certain **rights** within Swedish health care.
 - Knowledge about **rules and regulations** regarding non-Swedish citizens must be easy to access.
- New arrivals / migrants
 - Much focus on **refugees and asylum seeking** migrants.
 - Region Skåne needs a **broader perspective**.
 - Migrants can be **refugees, labour migrants, love migrants, family reunion** and so on.
 - **EU-migrants** – new phenomena



Examples: migration and health

- Long term residents in Sweden who suddenly experience PTSD.
- Language issues – elderly migrants who forget Swedish.
- Next of kin becomes interpreters.
- Difficulties in diagnostics due to language – for example dementia.
- Rituals and cultural norms regarding fatalities.
- Health in relation to socio economic factors where groups of migrants are especially vulnerable.
- Health literacy.



GENERAL ASSIGNMENTS

CURRENT INTERESTS

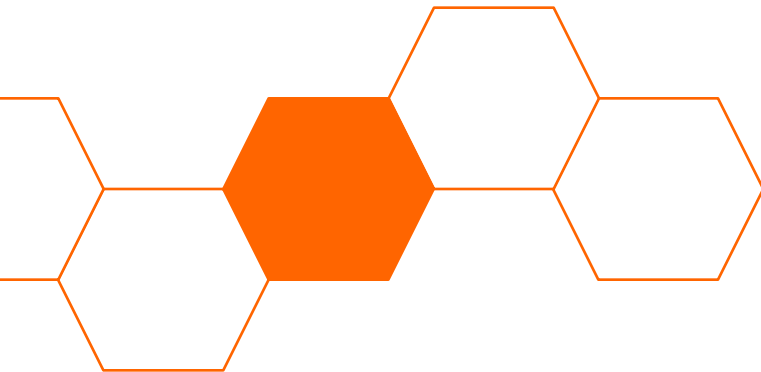
- Research
- Collaborations with universities
- Collaborations with other Centres of Knowledge

ANALYSIS AND DEVELOPMENT

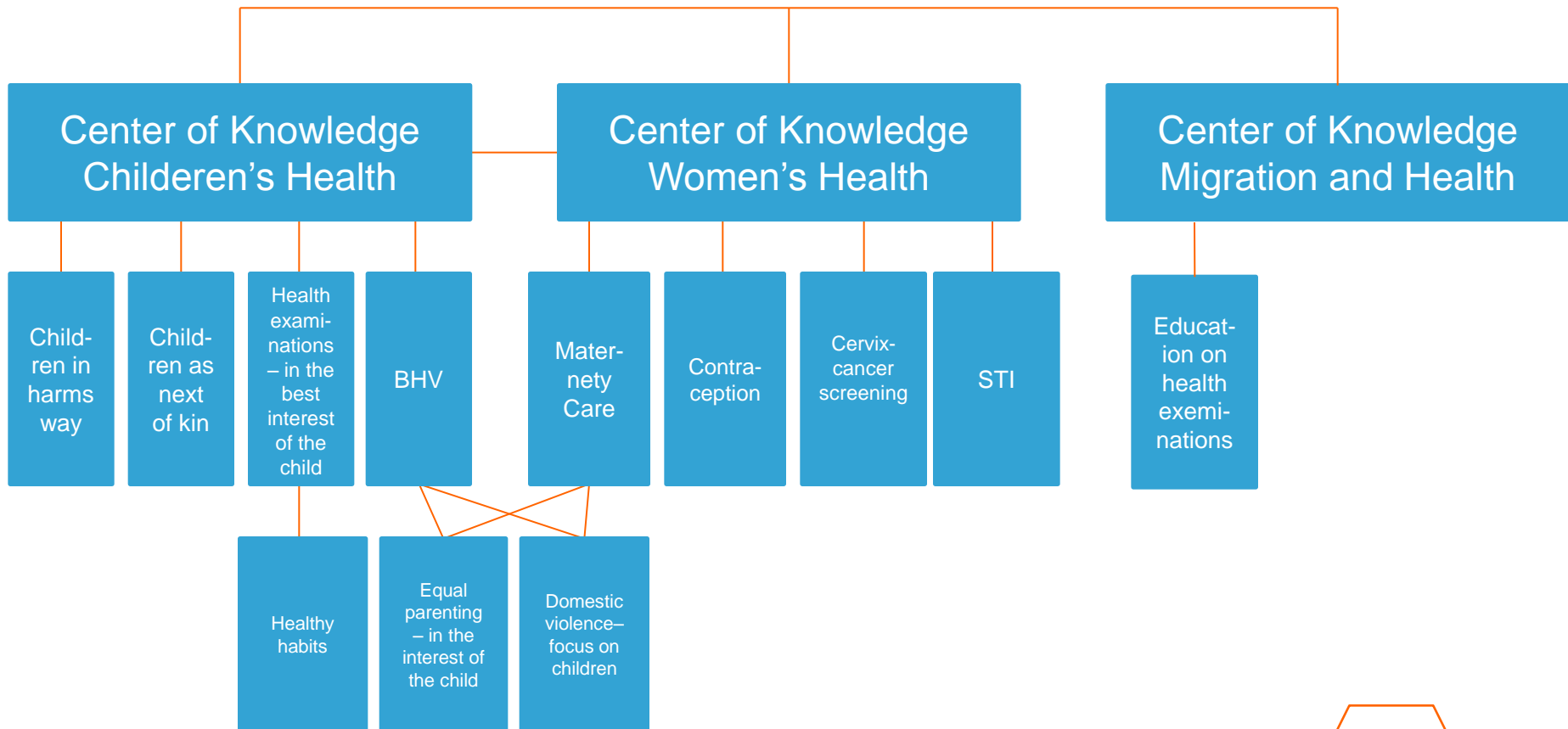
- Analyse and compare results
- Produce health care guidelines
- Quality registries
- Monitoring

EDUCATION AND IMPLEMENTATION

- Aid implementation process
- Education and in-service training
- Knowledge and expertise



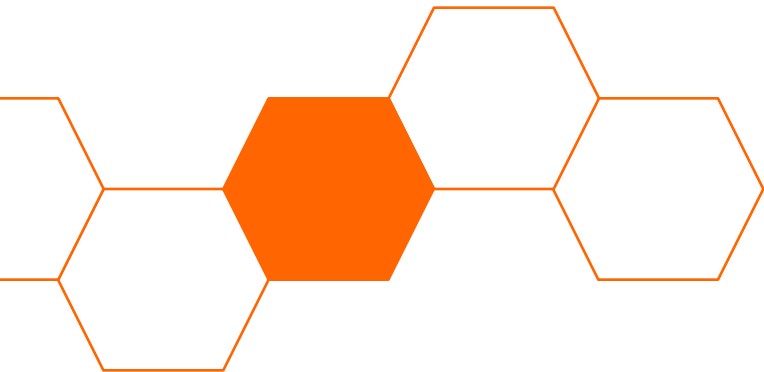
LOCATED WITH TWO OTHER CENTRES OF KNOWLEDGE - REPLICABILITY



Center of Knowledge Migration and Health (CKMH)



- **Financed** by Skåne Regional Council.
- **Strengthen knowledge** about multicultural issues for health care employees.
- **Promote** migrant health.
- **Implementing** policy and guidelines in all areas of health care within Region Skåne.
- Make sure that **methods** used are based on evidence or best practise in order to ensure quality.



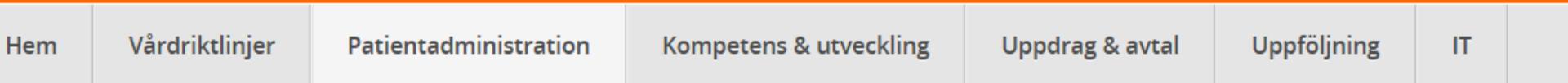
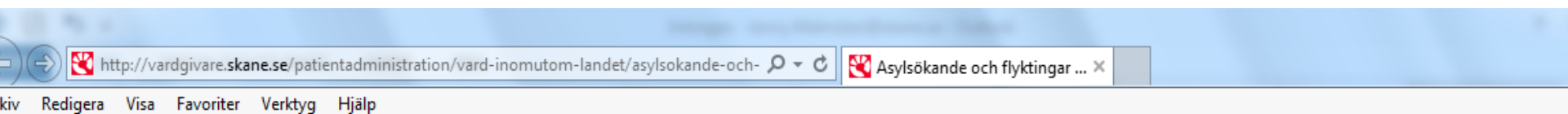
HEALTH EQUALITY

Activities

- CKMH plans to offer health care professionals :
 - Education
 - Counselling
 - Network meetings
- CKMH will work to promote migrant health and a preventive approach by identifying and mapping out areas where health care today is insufficient.
 - Raise awareness about health examinations to new arrivals
 - Raise awareness about health care needs among migrants
 - Develop and implement methods within health care



Web pages



... / Patientadministration / Vård inom/utom landet / Asylsökande och flyktingar

PATIENTADMINISTRATION

Avgifter och prislister >

Avvikelsehantering

Beställ produkter och tjänster >

Dödsfallshantering

1177 Vårdguiden >

Måltider och matsedlar

Lyssna Skriv ut

Asylsökande och flyktingar

Region Skåne har skyldighet att erbjuda hälso- och sjukvård till asylsökande och flyktingar. Här hittar du samlad information om bland annat riktlinjer, hälsoundersökning och samarbetspartners.

Du får inte avvisa asylsökande och andra (motsvarande) från mottagningen med hänvisning till att personen är asylsökande. Alla har rätt till en bedömning oavsett ursprung, det vill säga

NYHETER

[Nya hygienaffischer i verksamheter utanför vården](#)

[Nytt intyg för patienter från land inom EU/EEA som arbetar i Sverige](#)

[Ny tillämpning kring läkemedel för asylsökande och papperslösa](#)

Fler nyheter

Thank you!

[Skane.se/kcmigrationhalsa](https://skane.se/kcmigrationhalsa)

 jenny.malmsten@skane.se

